

Penril VCX 500 Access Network System



KEY FEATURES

- High speed async port modules
- 16 asynchronous ports per module
- 1200 to 115200 bps
- High speed link modules
- 1 link per module
- 1200 to T1/E1 speeds
- RS232, V.35, RS530
- Modular port and link modules
- 1 to 4 links
- 16 or 32 async ports
- Protocol Support includes:
 - VCX P-P Muxing
 - X.25 1988 version
 - PSTN
 - X.21
 - Frame relay w/VCX 601 and/or VCX 604
- Provides a variety of local and remote network connectivity solutions

The **Raymar-Telenetics** Penril VCX 500 is a networking product that provides high-speed async ports and trunks with a powerful 68360 processor to give the VCX users the latest in high technology. The VCX 500 can function as a Data PBX, an asynchronous X.25 PAD, a Statistical Multiplexer or any combination of these.

APPLICATIONS

The VCX 500 is a standalone or rack-mount unit with up to thirty-two (32) async ports and four (4) trunks.

SECURITY

The VCX 500 has extensive security features to safeguard network access. Logon is password protected and access to WAN trunks is controlled by assigned access rights. The network can be as open or as secure as the network manager desires.

SOFTWARE CONFIGURABLE

The VCX 500 supports software downloading to ease remote node upgrades and maintenance. In addition, all ports and trunk parameters and network configurations are stored in software and can be accessed by any terminal with proper access rights.

COMPREHENSIVE PORT CONTROL

- All connection services are menu-driven for easy set-up.
- VCX ports can be automatically connected to resources.
- Users can connect to eight resources and hot-toggle between them.
- Both local and remote destinations can be selected from a terminal. If the port is busy, the user is queued.

HDLC TRUNKS

All data transmitted between VCX nodes is transported using a full duplex protocol which protects against errors by retransmitting frames received in error. The statistical multiplexing protocol achieves high efficiency by transmitting data from active channels only.

PENRIL VCX 500 • Access Network System

PRODUCT SPECIFICATIONS

ASYNCH PORTS

Number: 16 to 32
 Interface: RS232/V.24DCE
 Control Signals: DTR, DSR, RTS, CTS, DCD
 Speeds: 1200, 2400, 4800, 9600, 14400, 16800, 19200, 38400, 57600, 115200bps

SYNC PORTS

Number: 1 to 4
 Interface: RS232, V.11 (RS422), V.35
 Control Signals: DTR, DSR, RTS, CTS, DCD, RI
 Speeds: 1200, 2400, 4800, 7200, 9600, 12000, 14400, 16800, 19200, 38400, 56000, 64000, 128000, 256000, 512000, 1.536M, 1.920M

PHYSICAL

Voltage: 90-260VAC, 47 to 63HZ
 Power: 100 watts
 Weight: 12 lbs
 Size: 17.5" W x 3.5" H x 15.0" D

MANAGEMENT

NMS support Series 6000

ENVIRONMENT

Temperature: 0° to 50° C
 Humidity: 10% to 90% relative, non-condensing
 Approvals: UL, CSA, and FCC Parts 15 and 68

ORDERING INFORMATION

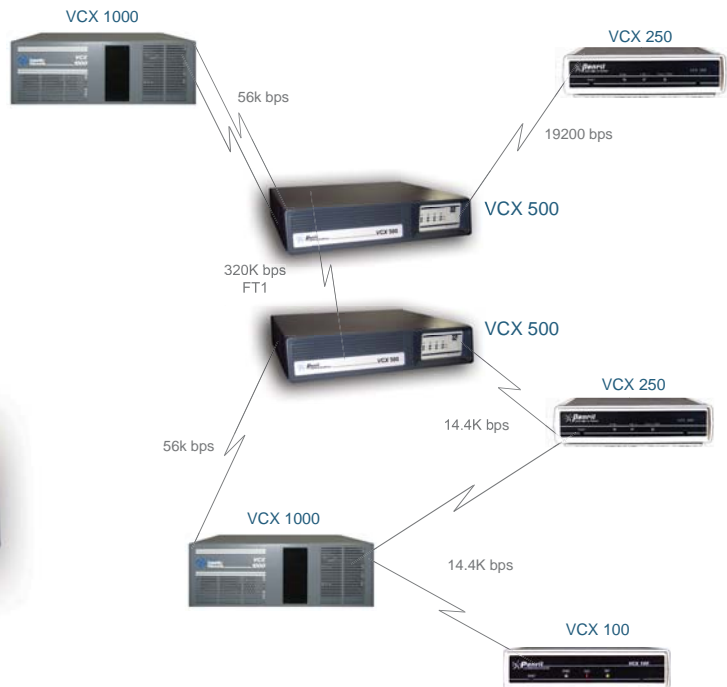
MODEL #	DESCRIPTION
PEN-4450-01	VCX500 AC Chassis
PEN-4450-03	VCX500 DC Chassis
PEN-4454-01	16 Port Async Expander
PEN-4455-01	Link Trunk Module
PEN-4460-01	Software, SW / MUX / XNET
PEN-4460-02	Software, X.25
PEN-4456-01	AC Power Supply, Spare
PEN-4456-02	DC Power Supply, Spare



Front



Back



VCX 500s used as Backbone Network



WARRANTY

Raymar-Telenetics manufactured products are warranted against defects in hardware material and workmanship under normal use for one (1) year from date of original retail purchase. Defective product will be repaired or replaced, determination to be made by Raymar-Telenetics, at no charge. Repaired or replaced products are warranted for 90 days or for original warranty period, whichever is longer. Warranty extends to original end-user only.



Manufactured in the USA by RAYMAR-TELENETICS

Raymar Information Technology, Inc., 7325 Roseville Road, Sacramento, CA 95842
 1-800-695-1951 fax 1-916-783-1952 sales@raymarinc.com www.raymarinc.com
 Service Support Hotline 1-800-747-1522