

PENRIL VCX 250 HIGH-SPEED NETWORKING MULTIPLEXER

FEATURES/ BENEFITS

- Powerful connectivity for remote async offices
- Handles multiple configurations: Network Multiplexer, Data PBX, X.25 PAD, X.21 Concentrator, VCX Onward Linking
- Flexible wide area network support with dual WAN trunks: Dial-Up, Leased Line, X.25, X.21; Trunk speeds up to 128K bps
- 4, 8, 16 async ports; DTE speeds up to 38.4Kbps
- Easy to install and operate
- Local and remote management. Downloadable software

The VCX 250 is a cost effective, standalone multiplexer that connects local and remote async devices, such as host computers, terminals and printers. The VCX 250 is ideally configured, priced for remote site networking and is completely compatible with all VCX models. The VCX 250 combines the dual trunk functionality of the VCX 150 and the small footprint of the VCX 100 with high speed processing power.

APPLICATIONS

The VCX 250 can be used as a stand alone solution for async device networking or can be used to connect remote sites in a larger VCX network. The VCX 250 is a versatile multiplexer that can be configured to support:

- Stand alone data PBX functions
- Point-to-Point networking for async devices
- Ring networks with multiple async user sites
- Onward linking for VCX networks
- X.25 PAD or host concentrator connections to X.21/ISDN networks
- Automatic dial-up on demand links within a VCX network

FLEXIBLE CONFIGURATION SUPPORT

Each VCX 250 is a stand alone unit pre-configured to support 4, 8 or 16 async ports and 1 or 2 wide area trunk ports. Each async port supports an RS232 interface and can handle DTE speeds up to 38.4Kbps. Each WAN port connects to either dial-up or leased lines. WAN ports are available with a RS232 interface for speeds up to 19.2Kbps or a V.35/V.11 interface for trunk rates up to 128Kbps. Any mix of WAN interfaces is possible. WAN trunks can also support an X.25 interface for connection to X.25 packet switched services or hosts. X.21 ISDN services are supported via the connection of a terminal adapter to the VCX 250 WAN trunk. The VCX 250 is shipped pre-configured and ready for immediate installation.



RAYMAR INFORMATION TECHNOLOGY, INC.

7325 Roseville Road
Sacramento, CA 95842
USA

+1-916-783-1951
FAX +1-916-783-1952

sales@raymarinc.com

1-800-695-1951

Tech Support Hotline
1-800-747-1522

www.raymarinc.com

PENRIL VCX 250 / HIGH-SPEED NETWORKING MULTIPLEXER

NETWORK MANAGEMENT

VCX 250 units can be managed from a single terminal in the network. Units can be configured, controlled, and fault diagnosed from this remote terminal. Data connections can be monitored to solve end-user operating problems. Noteworthy network events from all nodes can be sent to a single network printer or logged in a PC.

A larger network of VCX 250 nodes can be managed with the Series 6000 Network Management System. The Series 6000 uses a 386 PC platform and graphical user interface to ease network configuration, management, and trouble-shooting.

STRONG SECURITY

The VCX 250 has extensive security features to safeguard network access. Logon is password protected and access to WAN trunks, dial-out modem pools, and computer resources is controlled by assigned access rights. The network can be configured to be as open or as secure as the network manager desires.

COMPREHENSIVE PORT CONTROL

The VCX 250 has extensive features that control end-user terminal ports to ease and automate terminal to terminal connections.

- All connection services are menu driven for easy set-up
- VCX ports can be automatically connected to resources
- Users can connect to two resources and hot-toggle between them
- Both local and remote destinations can be selected from a terminal. If the port is busy, the VCX 250 queues the request for automatic connection when the port is available
- Global or port-specific directories can be displayed on the end-user terminal for ease of network navigation
- VCX has a configurable free text feature that allows help screens to be created by the network manager
- Automatic call forwarding is available if ports become disabled
- Any port, group, trunk, or connection path can be assigned a simple mnemonic name
- Ports can be quickly disabled with the port busy command
- An inactivity timer disconnects idle users to maximize valuable computer access
- Broadcast messages can be sent to any set of ports, including the entire network

WAN LINK SUPPORT

VCX 250 WAN links provide both speed conversion and flow control for multiple virtual circuits. All data is buffered and each end of a virtual circuit can have unique port characteristics to match the attached device. For example, a 2400 bps terminal can dialog with a 9600 bps computer port. Also an Xon/Xoff host can internetwork with a DTR printer. A statistical multiplexing protocol is used to transmit data between VCX nodes to protect against errors. This protocol is highly efficient, transmitting data from active channels only. VCX to VCX connections use the HDLC protocol over either private or dial-up lines.

SOFTWARE CONFIGURABLE

The VCX 250 supports software downloading to ease remote node upgrades and maintenance. In addition, all port and trunk parameters and network configurations are stored in software and can be accessed by any terminal with proper access rights.

ASYNCR PORTS

NUMBER:	4, 8, 16
ELECTRICAL INTERFACE:	RS232/V.24 DCE Async
PHYSICAL CONNECTOR:	RJ45
SPEED:	75, 110, 134.5, 150, 300, 600, 1.2K, 1.8K, 2K, 2.4K, 4.8K, 9.6K, 19.2K, 38.4K bps, autobaud 307.2Kbps max
AGGREGATE INPUT:	
CONTROL SIGNALS:	DTR, DSR, RTS, CTS, DCD

WAN TRUNKS

NUMBER:	1 or 2
INTERFACE:	RS232/V.24 Sync to 19.2Kbps V.35/V.11 DTE Sync to 128Kbps
AGGREGATE SPEED:	128Kbps
INTERNAL SPEED:	1.2K, 2.4K, 3.6K, 4.8K, 7.2K, 9.6K, 19.2K, 38.4K 56K, 64K, 128K
EXTERNAL SPEED:	0-128Kbps
CONTROL SIGNALS:	DTR, DSR, RTS, CTS, DCD

GENERAL

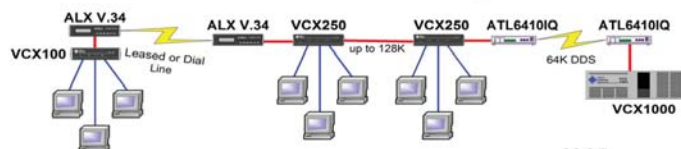
VOLTAGE:	110 VAC (220 VAC optional) 47-63 Hz
POWER:	15 watts
WEIGHT:	3 lbs
SIZE:	9.7"W x 2.5"H x 10.1"D

ORDERING INFORMATION

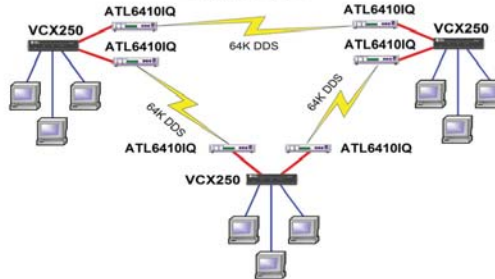
MODEL #	DESCRIPTION
PEN-4100-011	VCX 250 4-port Desktop/110V
PEN-4100-012	VCX 250 8-port Desktop/110V
PEN-4100-013	VCX 250 16-port Desktop/110V
PEN-4104-001	VCX 8-port Expander
PEN-4105-001	VCX 250 V.24 Trunk
PEN-4105-002	VCX 250 V.11 Trunk
PEN-4105-003	VCX 250 V.35 Trunk
PEN-4106-001	VCX 250 X.25 Software
PEN-4101-011	VCX 250 4-port Card Set
PEN-4101-012	VCX 250 8-port Card Set
PEN-4101-013	VCX 250 16-port Card Set

Specifications subject to change without notice; confirm when ordering.

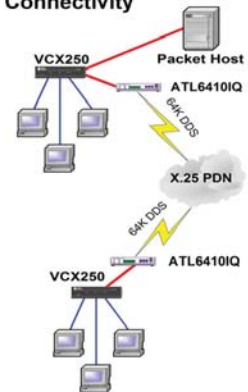
Point-to-Point Networking



Ring Network with Dual Trunks



X.25 Connectivity



WARRANTY

Raymar-Telenetics manufactured products are warranted against defects in hardware material and workmanship under normal use for one (1) year from date of original retail purchase. Defective product will be repaired or replaced, determination to be made by Raymar-Telenetics, at no charge. Repaired or replaced products are warranted for 90 days or for original warranty period, whichever is longer. Warranty extends to original end-user only.



Manufactured in the USA by RAYMAR-TELENETICS

Raymar Information Technology, Inc., 7325 Roseville Road, Sacramento, CA 95842
 1-800-695-1951 fax 1-916-783-1952 sales@raymarinc.com www.raymarinc.com
 Service Support Hotline 1-800-747-1522 © 2009 Raymar-Telenetics