



Optimux-108, Optimux-106

Fiber Multiplexers for 4E1/T1 and
Ethernet or Serial Data



- Multiplexes E1/T1 and Ethernet channels over a single fiber optic link
- Simple plug-and-play installation
- Range extension up to 120 km (74.5 miles)
- Full 100 Mbps Ethernet data rate (user)
- Redundant power supply and uplink
- Hot-swappable uplink interfaces
- Temperature-hardened enclosure
- Card version for the LRS-102 modem rack and for the Megaplex-4100
- Management via an ASCII terminal, Web server, Telnet, or RADview-EMS

For latest updates visit www.rad.com

Optimux-108 and Optimux-106 multiplexers transport four E1/T1 channels and optional Ethernet or serial data traffic (V.35) over a fiber optic link. The Optimux-106 and Optimux-108 are part of the AXCESS+ portfolio of multiservice access and First Mile solutions.

A pair of Optimux-108/106 units offers plug-and-play low cost connectivity for distances up to 120 km (74.5 miles).

Redundancy options

The Optimux transmits each of the E1 or T1 signals independently. The Ethernet user interface supports full line rate at 100 Mbps.

An optional secondary link provides backup using automatic switchover upon link failure, and an optional secondary power supply provides power redundancy and fail-safe operation.

Various optical interfaces are available:

- 850 nm VCSEL for use with multimode fiber
- 1310 nm for use with multimode fiber
- 1310 nm or 1550 nm short or long haul laser for extended range over single mode fiber
- Single mode over a single fiber (WDM) option

Central site solutions

For grooming applications, the product can be supplied in card form for deployment in Megaplex-4100. In such applications, the E1/T1 and Ethernet traffic is carried over the fiber uplink and switched to the SDH/SONET PSN backbone, respectively (see page 88).

For transparent rack solutions, a card form can be deployed in the LRS-102 (see page 126). This provides fully transparent transmission of all types of voice and data traffic, with an option to set each channel to a different clock source. As

an additional feature for mixed environments, the LRS-102/Megaplex-4100 provides a one-box solution for transmitting over copper modem, including SHDSL.bis, alongside fiber.

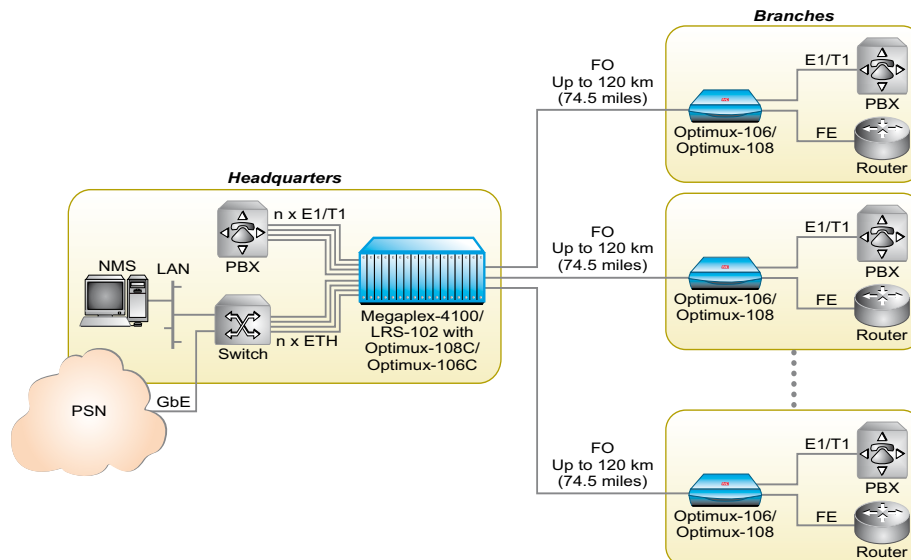
Management options

The Optimux-106 and Optimux-108 feature flexible management capabilities, including local management via an ASCII terminal (RS-232). In addition, remote management can be performed either inband using the network or user ports or out-of-band using a dedicated management port, while maintaining separation between management and user traffic.

Advanced FCAPS (Fault, Configuration, Administration, Performance, Security) and diagnostic tools are provided by RADview-EMS, RAD's carrier-class element management system, via an SNMP-based GUI.

The Optimux-106 and Optimux-108 also support a variety of access protocols, including Telnet, SNMP and Web server.

The standalone units are supplied in a half 19-inch, 1U-high compact device available in a plastic or metal enclosure with extended temperature range.



Service extension over fiber

